



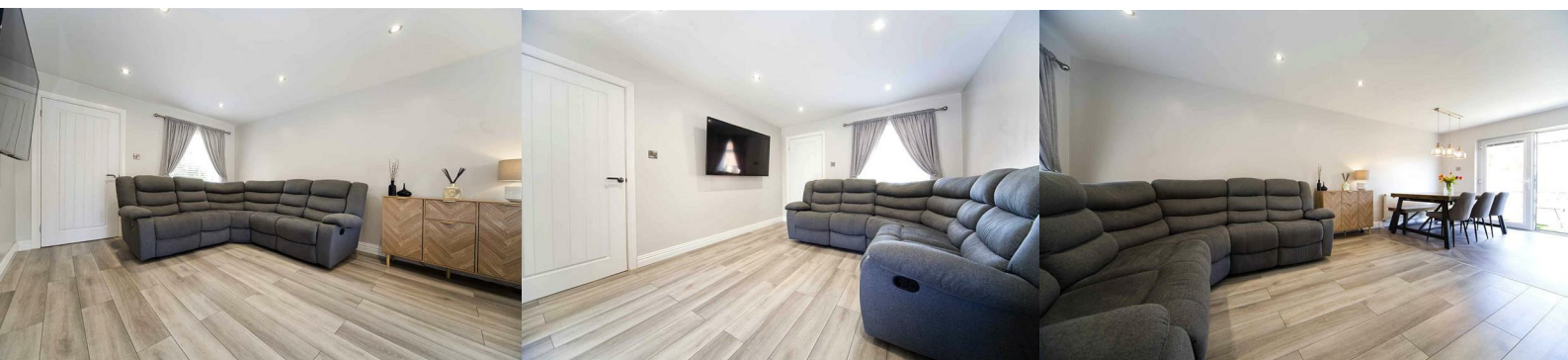
## 3 John Howe Gardens

, Hartlepool, TS24 9NQ

**£199,950**



Igomove happily present to the market this immaculate three/four bedroomed detached house situated on a small development, it provides a host of key desirable attributes including; three well proportioned bedrooms, (master with ensuite facilities), modern family bathroom, fourth double bedroom to the ground floor (or additional sitting room) dual aspect lounge, excellent fitted dining kitchen, pristine rear garden, three car driveway, UPVC double glazing, gas central heating via recently fitted boiler, immaculate decor throughout, fitted blinds, freehold.



Well presented frontage, three car block paved driveway, porch entry into;

Dual aspect lounge benefiting from both window to the front elevation and from French doors which open to the rear garden, laminate flooring, recessed spotlights, excellent decor, open plan to the kitchen.

Turned stairs to the first floor accommodation, bespoke wall panelling, laminate flooring, pristine decor.

Bedroom four is of double proportions with window to the front elevation, a versatile room which could also be used as an additional sitting room or dining room (converted from the garage), immaculate decor.

Well equipped kitchen diner fitted with a range of sleek contemporary larder, wall, base, and drawer cabinetry, complementary solid quartz surfaces, integrated Neff oven, integrated Neff microwave, integrated ceramic hob, inset sink with mixer tap, integrated washing machine, integrated fridge freezer, breakfast bar, beautiful flooring, recessed lighting, exterior half glazed access door.

To the first floor landing, there is a front elevation window providing natural light. There is also a storage cupboard.

Master double bedroom with side elevation window, fitted sliding wardrobes, custom wall panelling, impeccable decor and with access to;

Ensuite shower room which comprises shower enclosure, concealed cistern WC and wash basin, heated towel radiator, modern wall panelling.

Bedroom two is another good size double with fitted storage cupboard, impeccably presented.

Bedroom three is a further double located to the front of the property, pristine decor.

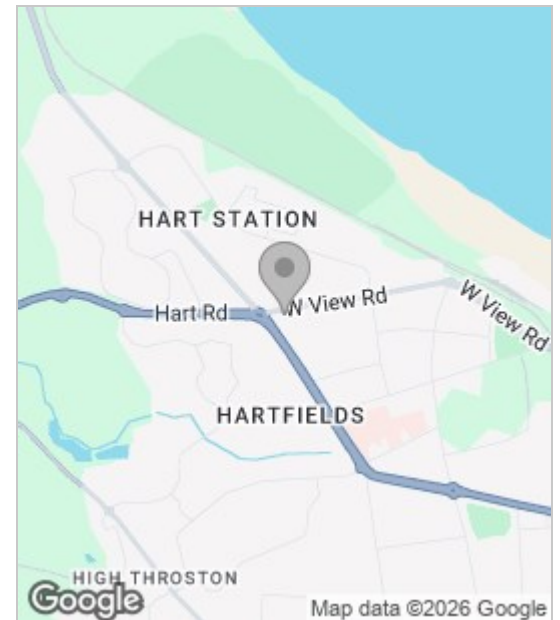
The stylish family bathroom comprises bath with shower head tap, close coupled WC and pedestal wash basin with complimentary tiling, heated towel rail.

Fully boarded loft with ladders.

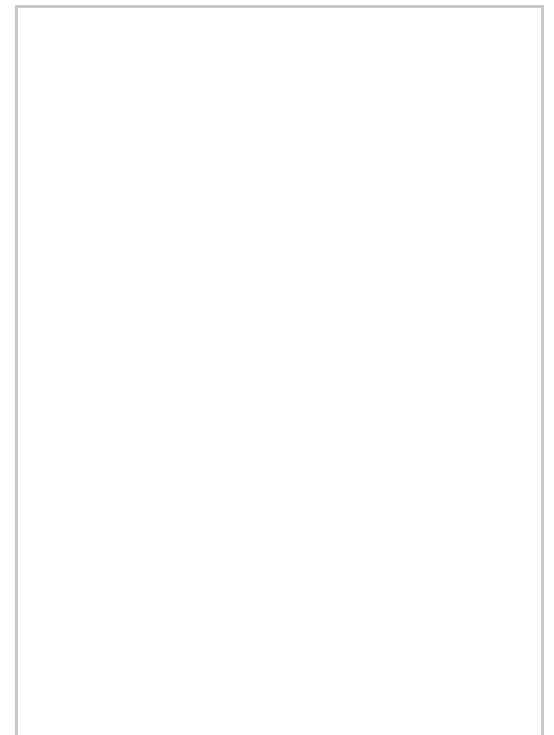
To the rear there is an enclosed, impeccably presented garden laid to lawn with patio area and garden shed.

Impeccably presented and lovingly cared for inside and out, Igomove highly recommend early viewing of this delightful property.

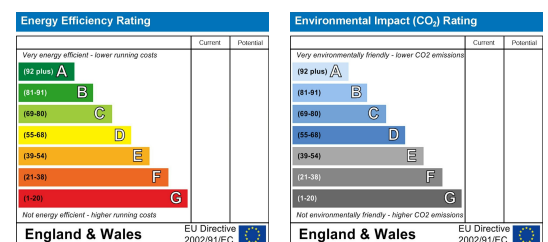
## Area Map



## Floor Plan



## Energy Efficiency Graph



These particulars, whilst believed to be accurate are set out as a general outline only for guidance and do not constitute any part of an offer or contract. Intending purchasers should not rely on them as statements of representation of fact, but must satisfy themselves by inspection or otherwise as to their accuracy. No person in this firm's employment has the authority to make or give any representation or warranty in respect of the property.